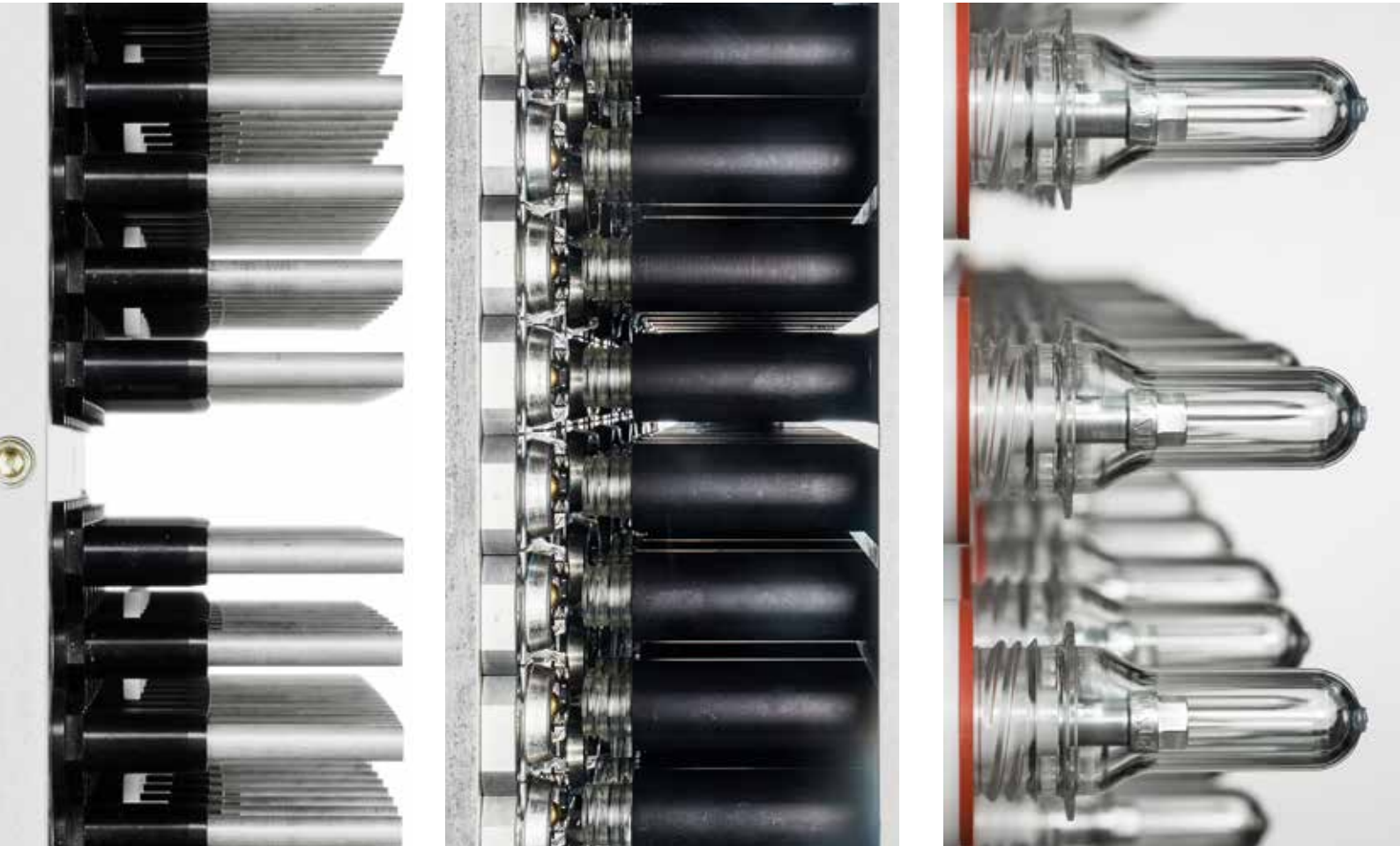




MHT MOLD & HOTRUNNER
TECHNOLOGY AG



Post Mold Cooling Solutions

Post Mold Cooling

The cooling is crucial for the preform quality, the cycle time and the resulting output. MHT has been supplying the global market with high performance PET molds and post mold cooling solutions since 1996. Our experience is your advantage. Like no other company we know what it takes to adapt PMC to different machine types and generations. Our wealth of technical knowledge and innovative power is shown in many patents we own.



Quality preforms in shortest cycle



COOLMAX®

- Up to four stages
- Staggered version available
- Gripper pins, standard or spring loaded
- Air baffle (for thread cooling)
- For all cavitations
- Bladder function available

TAKE-OUT PLATE

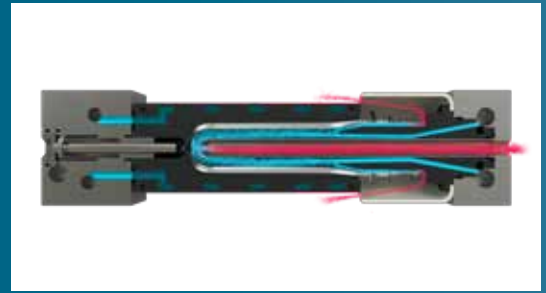
- Up to four stages EAOT
- Exchangeable cooling sleeves
- Cooling sleeves with an helix flow channel



Cooling pins: standard and equipped with air baffle
Gripper pins: spring loaded and standard



Precise and quick transfer



Efficient and patented air flow MHTcoolMAX®

Take-out side entry

When it comes to a fast and smooth transfer of up to 192 preforms, everything must work together: high precision mold, post mold cooling solution and gripping plate. MHT will make that happen. Very ambitious cycle times are possible by cooling preforms with the patented coolMAX® technology.

Available Platforms

Sacmi

Husky

Netstal

Sumitomo

Niigon

Milacron

Sipa

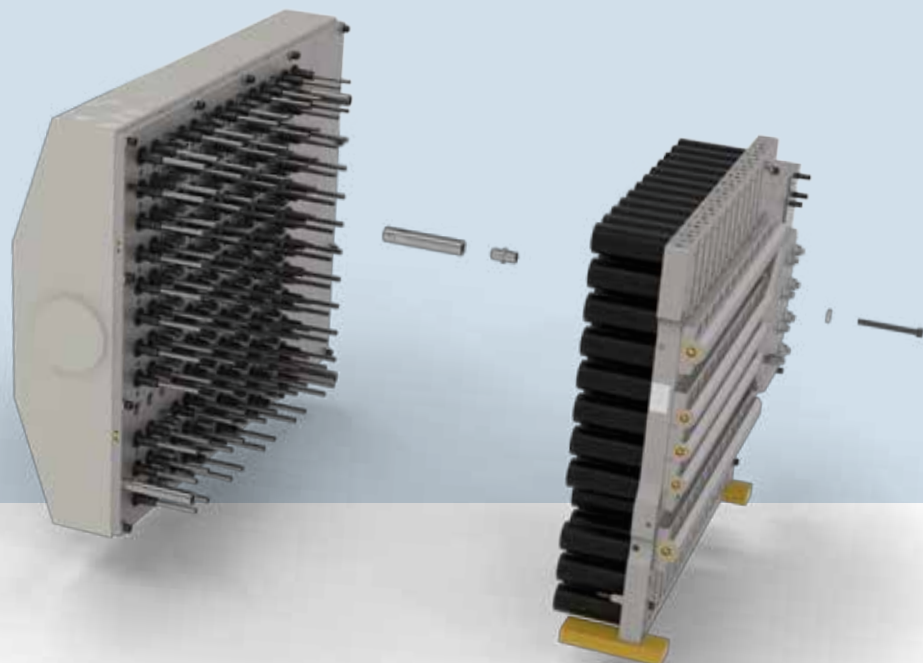
and others

ADVANTAGES COOLMAX®

- Patented air flow shows higher efficiency than competitor solution
- Splits the air uniformly for separate cooling of neck and body
- Pin follows the preform geometry
- Combination of part picking and cooling in one plate

ADVANTAGES TAKE-OUT

- Very stable double tube assembly
- Full compatibility to industry standard



Top & vertical-side entry

MHT was the first to build a mold for the vertical PET machine from KraussMaffei and we are still convinced that this is a technology that does have some advantages. Parts are dropped under gravity – no air blow needed – caught by the gripper plate and transferred to a four side cooling cube. This proven concept we were able to adapt for the top entry machine from Netstal: with a transfer plate unloading a take-out plate and loading a cooling block with individual helix cooled sleeves.



Available Platforms

Netstal

KraussMaffei

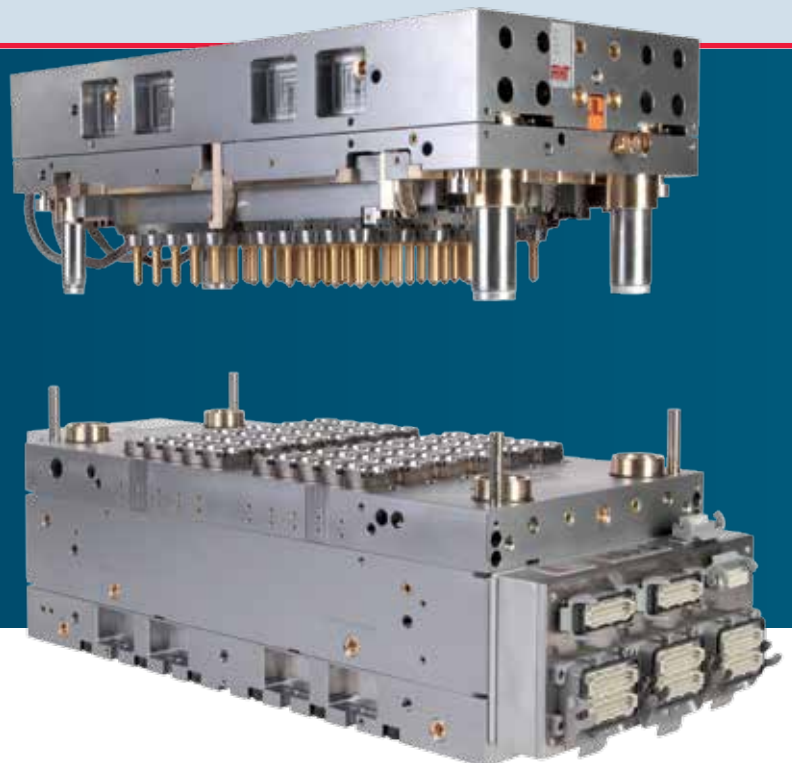
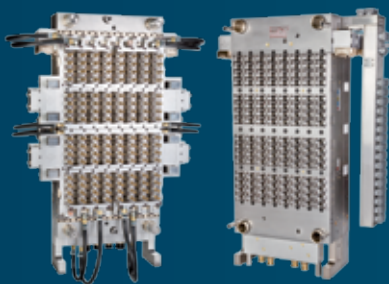
and others

ADVANTAGES COOLING BLOCK

- Easy to maintain, no monobloc
- Exchangeable individual carrier plates with mounted cooling sleeves
- Cooling sleeves with efficient helix flow channels

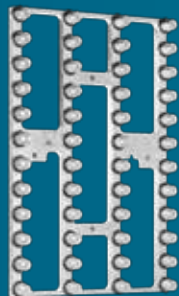
TECHNICAL FEATURES

- Up to four stages
- All parts exchangeable for easy maintenance and conversion
- Light weight transfer plates for fast movements
- Corrosion resistant anodized aluminium parts

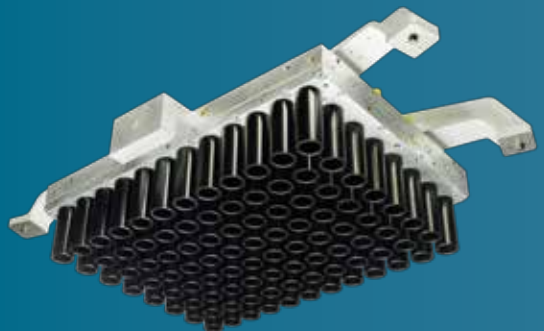




Take-out plate



Transfer plate



Cooling block

Adapter Kits

Different makes, sizes or generations of machines in your plant? MHT can make (almost) anything fit. We offer adapter kits and with our upgrade solutions we can take your output to the next level.

MACHINE TYPE

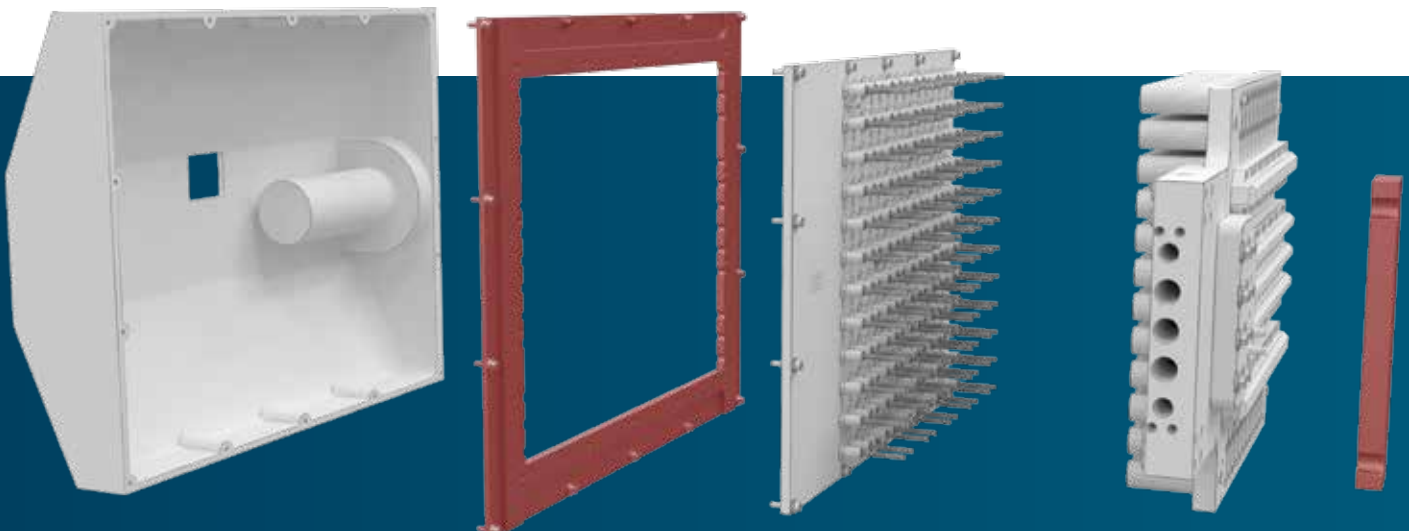
To the Next Generation

- Adapter block for take-out
- Ejector pins for cooling tubes
- Adding of coolMAX® or gripper plate
- Part detection kit extension for additional rows

MACHINE SIZE

From Lower to Higher Tonnage

- Adapter block for take-out
- Fitting frame for coolMAX®



PET SYSTEM

From Brand to Brand

- Adapter block for take-out
- Fitting frame for coolMAX®
- Adding coolMAX® or gripper plate

UPGRADE

Pushing the Output Boundaries

- More cavities on the same machine
- Corresponding take-out plate as well as coolMAX® or gripping plate
- Extension part detection kit for additional rows



Special Take-Out

Sometimes it takes a bit of an extra effort. For example for tricky wide mouth applications, different preform sizes / pitches or when preforms have a hole in the bottom area and cannot be removed from the mold by creating a vacuum. We like challenges and will find solutions.



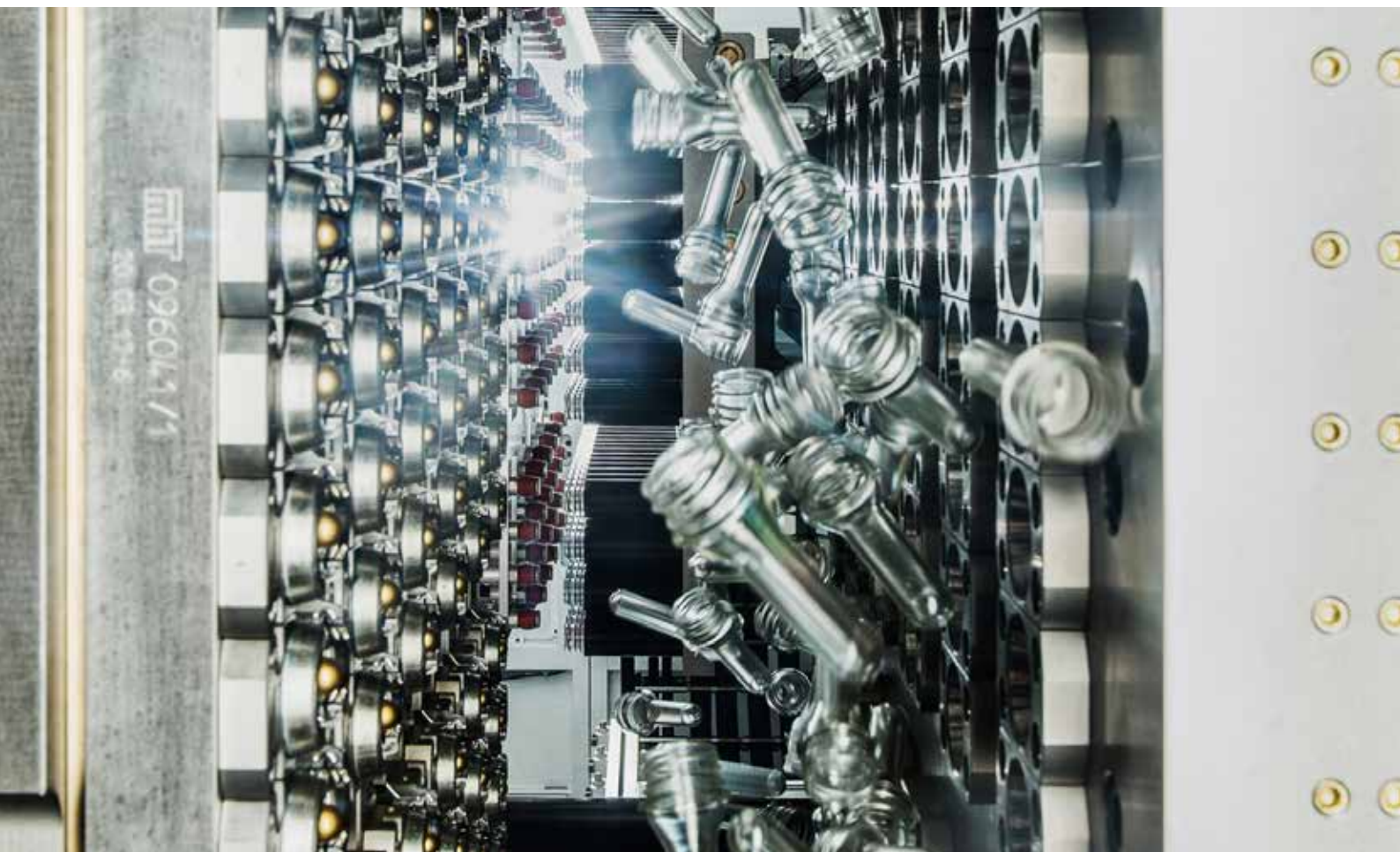
ADJUSTABLE GRIPPER PLATE FOR SACMI IPS 400

- One plate, many opportunities
- Wide variation of different pitches in X & Y
- From 48 up to 144 cavities
- Independent from inner preform diameter
- Simply upgradable





MHT MOLD & HOTRUNNER
TECHNOLOGY AG



MHT Mold & Hotrunner Technology AG
Dr. Ruben-Rausing-Str. 7
D-65239 Hochheim/Main
Tel. +49 (0) 6146-906-0
www.mht-ag.com